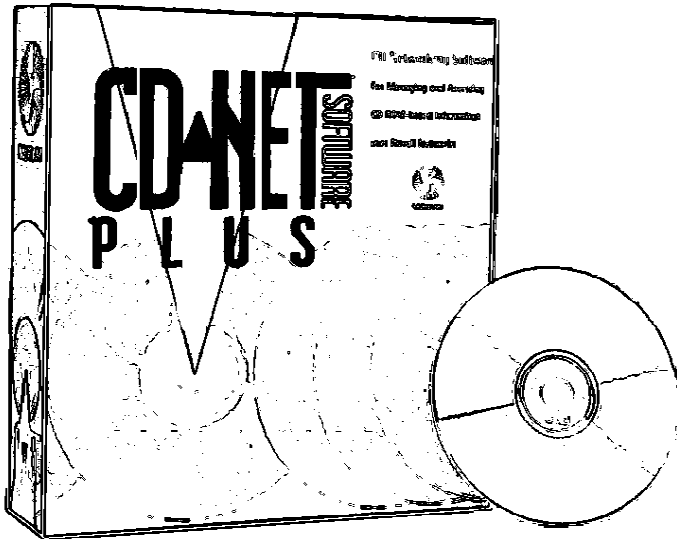


CD Net® *Plus* Software

Advanced CD ROM Networking Software Peer-to-Peer Solution for Novell Networks



Grouping feature. Administrators may configure end-user access to volume groups from a central application, providing the users with point-and-click access to multiple CD ROMs.

Automated CD Access

Compact discs frequently include application searching software. CD Net *Plus* includes Meridian's CD Admin application, which provides the administrator with the tools necessary to configure CD applications once in a central place for ongoing access by Windows stations on the network. Users may access CDs through a simple point-and-click graphical interface.

CD Net Tools

CD Net *Plus* includes Meridian's new CD Net Tools performance and system monitor. This provides administrators with powerful graphical tools to measure system throughput, optimize system usage and configure the CD server.

CD Net Tools Pro

The optional CD-Net Tools *Pro* package provides seamless, snap-in integration with Novell ManageWise for easy administration with other NetWare resources. It also provides drill-down detail to drive-level statistics for analysis of software license usage and performance over time.

Reliability and Support

CD Net *Plus* Software is a mature sixth-generation product that is one of the most widely used products for sharing CD ROMs. Meridian backs up every product with a comprehensive Reliance Support Program, including one year warranty, toll-free hotline, World Wide Web home page and bulletin board service.

CD Net® *Plus* Software provides a powerful full-featured solution for configuring and managing shared CD ROMs over Novell-based networks. Operating independently of the main network file server, there is no requirement to add hardware or software to the Novell file server.

Easy to Install

The flexible and easy-to-use Windows-based installation software allows for loading of remote management and end-user applications from any Windows computer on the network. Support is provided for installing administrator or user utilities to either a network directory or local hard disk drive. Complete client uninstall is provided.

Dedicated CD Server

Meridian's high-performance PC-based CD server software provides a complete peer-to-peer solution for sharing CD ROMs. The CD server provides simultaneous user

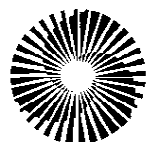
access to multiple CD ROM drives, with no data traffic generated on the main network file servers. Security and license metering are provided. The server supports discs formatted in the industry-standard ISO9660, High Sierra and Apple HFS file structures.

Value-Added Clients

Meridian provides enhanced client software for Windows, Windows for Workgroups and Windows 95 network computers. The software runs entirely in Windows and provides the ability to map local drive letters to CD ROM drives contained in CD Net *Plus* servers and local CD ROM drives, eliminating the requirement to load Microsoft Extensions (MSCDEX). Support for DOS-only clients and Macintosh clients is available.

Powerful Mapping Tools

Users can access an unlimited number of CD ROMs in one or more CD servers under one desktop drive letter with the unique and powerful Volume



MERIDIAN

CD Net[®] Plus Software

System Requirements

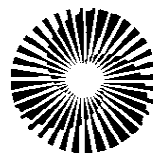
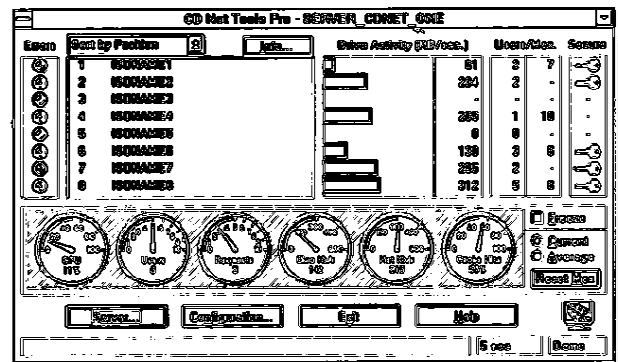
Dedicated CD Server	
Hardware	Intel-based 386/33 or higher processor with 1MB of system memory minimum and a 3.5" high-density floppy diskette drive, configured on the network with an appropriate network interface card and Novell ODI IPX/SPX network device drivers. Hard disk recommended but not required. Installation requires PC-compatible keyboard and display. Additional system memory (up to 16MB total) improves performance.
Operating System Software	MS-DOS v5.0 or higher.
CD ROM Controller Interface	Host adapter with a CD ROM device driver 100% compatible with the MS-DOS CD ROM Extensions Device Driver interface. Bus-mastering SCSI-II controller with 100% Adaptec ASPI-compliant device drivers recommended for best performance and compatibility with CD-Recordable and Photo CD disc formats.
CD ROM Drives	One or more CD ROM drives supporting the Yellow Book Mode 1 single session, CD ROM-XA mode 2 form 1 single or multisession, or CD-I Bridge media format standards. 4x or higher speed drives with a SCSI-II interface recommended for best performance.
Compact Disc Format	Industry-standard ISO9660 file structure in single or multisession Bridge disc formats, High Sierra and Apple HFS format.
Remote Management Station & Graphical End User Station	
Usage Type	Non-dedicated, may be installed on existing Windows-capable computers.
Hardware	Intel-based 386/33 or higher processor with 8MB of system memory minimum and 1MB of hard disk space available, configured with a NetWare-compatible network adapter, Windows-compatible video graphics adapter, color graphics-capable monitor, keyboard and pointing device.
Operating System Software	Microsoft Windows v3.1, Windows for Workgroups or Windows 95 configured with the Novell NetWare Device Driver v3.03 or higher. Security and metering configuration requires supervisor-level security access to the NetWare file server.
Macintosh Graphical User Station (optional)	
Usage Type	Non-dedicated, may be installed on existing Macintosh computers.
Hardware	Macintosh with 1MB of hard disk space available, configured with a NetWare-compatible Ethernet network adapter.
Operating System Software	Mac OS 7.1 or higher configured with the Novell NetWare IPX/SPX Network Device Driver.

Starter Package Contents:

- CD Net Plus server software and remote management, client software and applications distributed on CD ROM
- License agreement to install and use the server software on one PC with either 10 or unlimited concurrent users; and license agreement to install and use the Windows-based applications on the entire network
- Administrative and user documentation
- Product registration card

Options:

- Mac Client Kit software providing connection for Ethernet-equipped Macintosh computers
- CD NetROM™ Subsystems providing one or many external high-performance CD ROM drives, a CD ROM host adapter and device drivers for direct connection to the CD Net Plus server
- CD Net Tools Pro provides detailed system reporting and analysis



MERIDIAN

Meridian Data, Inc.
 Corporate Headquarters:
 5615 Scotts Valley Drive
 Scotts Valley, CA 95066
 Phone: 408/438-3100
 800/767-2537
 Fax: 408/438-6816
<http://www.meridian-data.com>

The Meridian logo and CD NetROM are trademarks and CD Net is a registered trademark of Meridian Data, Inc. All other product names mentioned herein are trademarks or registered trademarks of their respective companies. Specifications subject to change without notice. Printed in the U.S.A. ©1996 Meridian Data, Inc. All rights reserved.